

Product data sheet

Specifications



Copper terminals lug, Harmony, for SSP1 solid state relay

SSRAL1

Main

Range Of Product	Harmony Solid State Relays
Product Or Component Type	Lug
Accessory / Separate Part Category	Mounting accessory
Accessory / Separate Part Destination	SSP1 solid state relay

Complementary

Material	Copper
Awg Gauge	AWG 6...AWG 1/0
Tightening Torque	1.3...1.7 N.m
Wire Clamp Screw Torque	2.3 N.m
Net Weight	0.033 kg
Sale Per Indivisible Quantity	10

Packing Units

Unit Type Of Package 1	PCE
Number Of Units In Package 1	1
Package 1 Height	2.000 cm
Package 1 Width	4.000 cm
Package 1 Length	5.000 cm
Package 1 Weight	35.000 g
Unit Type Of Package 2	BB1
Number Of Units In Package 2	10
Package 2 Height	4.000 cm
Package 2 Width	8.500 cm
Package 2 Length	12.500 cm
Package 2 Weight	375.000 g
Unit Type Of Package 3	S01
Number Of Units In Package 3	90
Package 3 Height	15.000 cm
Package 3 Width	15.000 cm
Package 3 Length	40.000 cm

Disclaimer: This documentation is not intended as a substitute for and is not to be used for determining suitability or reliability of these products for specific user applications

Package 3 Weight	3.671 kg
------------------	----------

Sustainability

Green Premium™ label is Schneider Electric's commitment to delivering products with best-in-class environmental performance. Green Premium promises compliance with the latest regulations, transparency on environmental impacts, as well as circular and low-CO₂ products.

Guide to assessing product sustainability is a white paper that clarifies global eco-label standards and how to interpret environmental declarations.

[Learn more about Green Premium >](#)

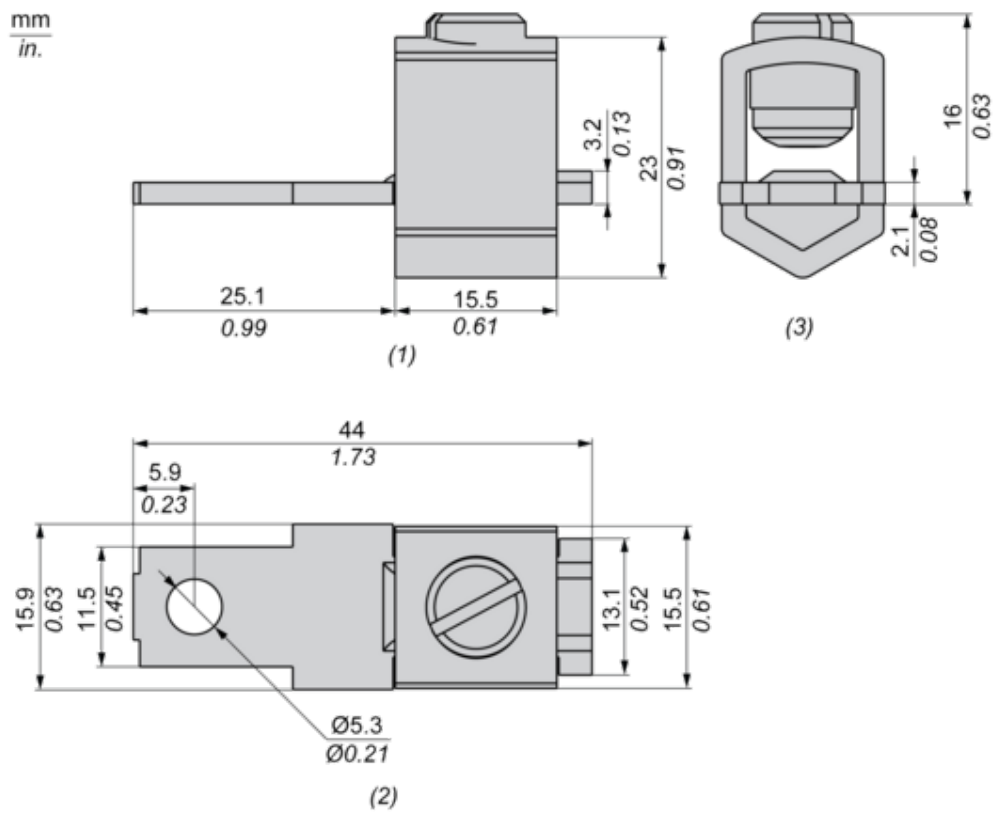
[Guide to assess a product's sustainability >](#)

Well-being performance

✓	Reach Free Of Svhc	
✓	Toxic Heavy Metal Free	
✓	Mercury Free	
✓	Rohs Exemption Information	Yes
Reach Regulation	REACH Declaration	
Eu Rohs Directive	Compliant EU RoHS Declaration	
China Rohs Regulation	China RoHS declaration	
Weee	The product must be disposed on European Union markets following specific waste collection and never end up in rubbish bins	

Dimensions Drawings

Dimensions



- (1) Front view
- (2) Top view
- (3) Side view